



CHEERS RE
Upholstery fabrics

 **svensson**



3033



3051



3131



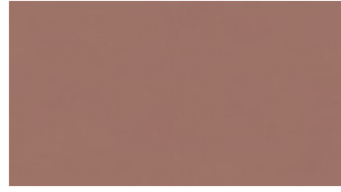
3253



3426



3527



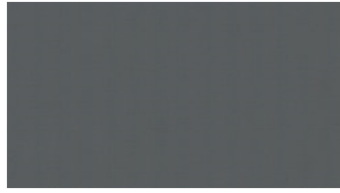
3972



4370



4445



4462



4553



4562



4572



4663



5020



5163



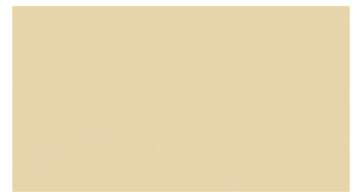
5545



5572



6330



6511

CHEERS RE Upholstery fabrics

Width: 140 cm

Weight: 310 g/m²

Material: Recycled Trevira CS 100%

Shrinkage: 2 %

Color fastness:

Against dry rubbing according to

EN ISO 105-X12:

- ≥ 4 (Scale 1-5)

Against light according to EN ISO

105-B02

- ≥ 5 - 7 (Scale 1-8)

Against wet rubbing according to

EN ISO 105-X12:

- ≥ 3-4 (Scale 1-5)

Abrasion resistance:

Martindale (According to EN ISO 12947-2):

- 50000 rubs

Flame retardancy:

- EN 1021-1&2 - DIN 4102-1

B1- BS 5852 Crib 5- EN 13501-1;

B-s1, d0- NFP 92-503-507 M1- IMO

FTP Code 2010:

- DIN 4102-1 B1

- BS 5852 Crib 5

- EN 13501-1; B-s1, d0

- NFP 92-503-507 M1

- IMO FTP Code 2010: Part 8

Care instructions:



For further information:

Svensson
511 82 Kinna, Sweden

T: +46 320 20 92 00

F: +46 320 21 10 10

E: info@ludvigsvensson.com





6513



6721



6932



6952



8900

CHEERS RE Upholstery fabrics

Width: 140 cm

Weight: 310 g/m²

Material: Recycled Trevira CS 100%

Shrinkage: 2 %

Color fastness:

Against dry rubbing according to

EN ISO 105-X12:

- ≥ 4 (Scale 1-5)

Against light according to EN ISO

105-B02

- ≥ 5 - 7 (Scale 1-8)

Against wet rubbing according to

EN ISO 105-X12:

- ≥ 3-4 (Scale 1-5)

Abrasion resistance:

Martindale (According to EN ISO

12947-2):

- 50000 rubs

Flame retardancy:

- EN 1021-1&2 - DIN 4102-1

B1- BS 5852 Crib 5- EN 13501-1;

B-s1, d0- NFP 92-503-507 M1- IMO

FTP Code 2010:

- DIN 4102-1 B1

- BS 5852 Crib 5

- EN 13501-1; B-s1, d0

- NFP 92-503-507 M1

- IMO FTP Code 2010: Part 8

Care instructions:



For further information:

Svensson
511 82 Kinna, Sweden

T: +46 320 20 92 00

F: +46 320 21 10 10

E: info@ludvigsvensson.com

