

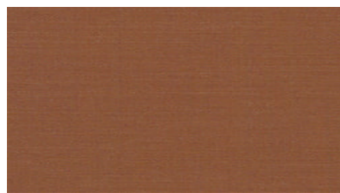


CODY
Möbelstoff

 **svensson**



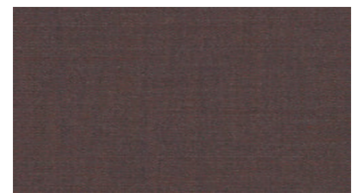
3226



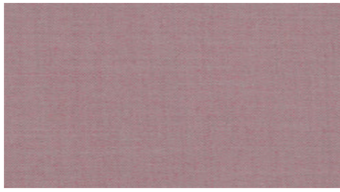
3334



3350



3572



3633



4152



4380



4462



4522



4831



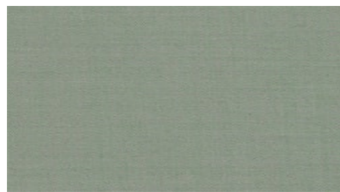
4862



5251



5261



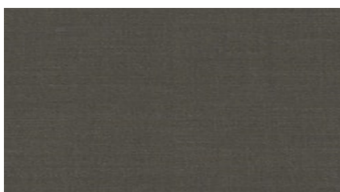
5731



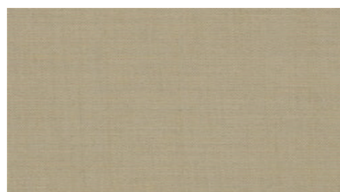
5870



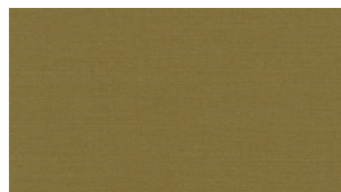
5934



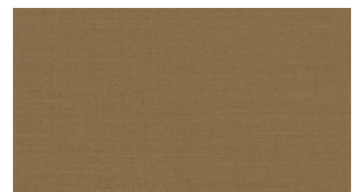
6360



6422



6443



6453

CODY

Möbelstoff

Breite: 140 cm
Gewicht: 280 G/M²
Material: Wolle 85%
 Polyamid 15%

Color fastness:
 Against dry rubbing according to
 EN ISO 105-X12:
 - ≥ 4 (Scale 1-5)
 Gegen Licht nach EN ISO 105-B02
 - ≥ 5-7 (Skala 1-8)
 Against wet rubbing according to
 EN ISO 105-X12:
 - ≥ 3-4 (Scale 1-5)

Scheuerfestigkeit:
 Martindale (Nach: EN ISO 12947-2):
 - 100000 Touren

Schwerentflammbarkeit:
 - EN ISO 1021 part 1, 2- BS 5852,
 Crib 5- IMO FTP Code 2010:
 - BS 5852, Crib 5
 - IMO FTP Code 2010: Part 8

Wartungsanweisungen:

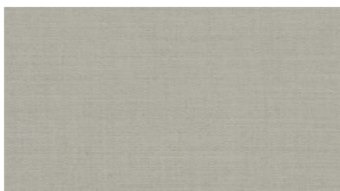


For further information:

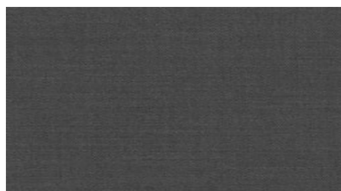
Svensson
 511 82 Kinna, Sweden

T: +46 320 20 92 00
 F: +46 320 21 10 10
 E: info@ludvigsvensson.com

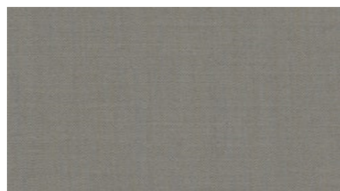




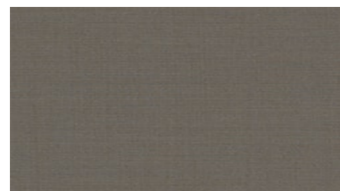
6520



6560



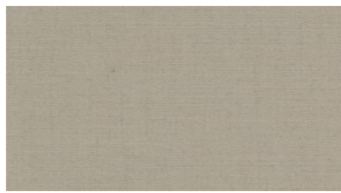
6740



6750



6770



6820



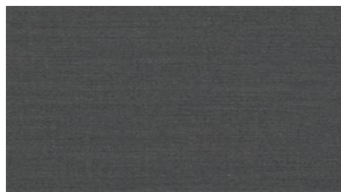
6826



6841



8400



8800

CODY

Möbelstoff

Breite: 140 cm
Gewicht: 280 G/M²
Material: Wolle 85%
 Polyamid 15%

Color fastness:
Against dry rubbing according to EN ISO 105-X12:
 - ≥ 4 (Scale 1-5)
Gegen Licht nach EN ISO 105-B02
 - ≥ 5-7 (Skala 1-8)
Against wet rubbing according to EN ISO 105-X12:
 - ≥ 3-4 (Scale 1-5)

Scheuerfestigkeit:
Martindale (Nach: EN ISO 12947-2):
 - 100000 Touren

Schwerentflammbarkeit:
 - EN ISO 1021 part 1, 2- BS 5852,
 Crib 5- IMO FTP Code 2010:
 - BS 5852, Crib 5
 - IMO FTP Code 2010: Part 8

Wartungsanweisungen:



For further information:

Svensson
 511 82 Kinna, Sweden

T: +46 320 20 92 00
 F: +46 320 21 10 10
 E: info@ludvigsvensson.com

