

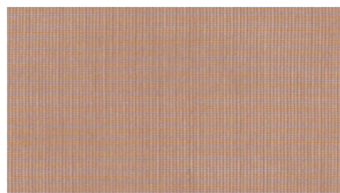


**AIRY**  
Hängende Textilien

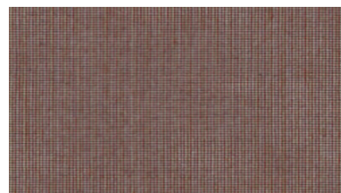
 **svensson**



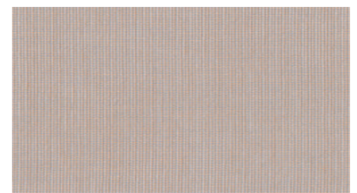
3010



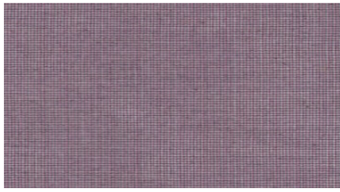
3243



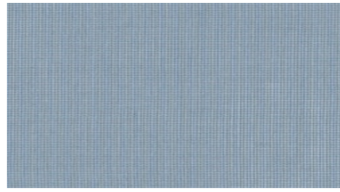
3463



3631



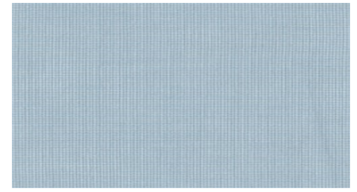
4053



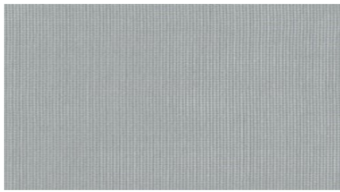
4333



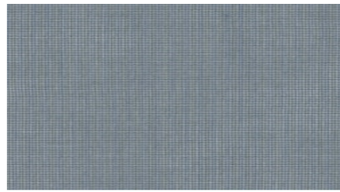
4410



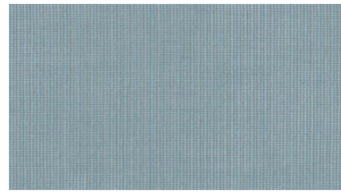
4422



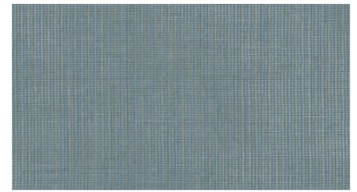
4441



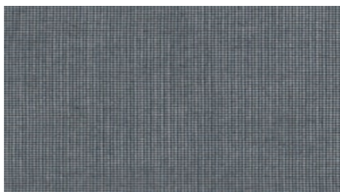
4461



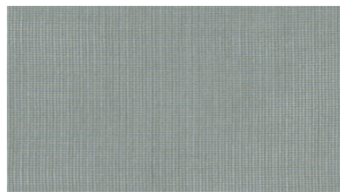
4542



4652



4672



4851



5031



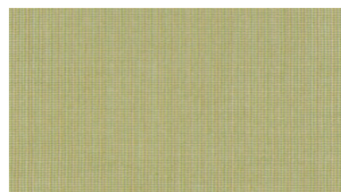
5631



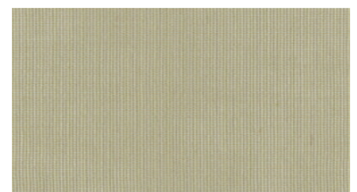
5681



6242



6444



6531

## AIRY

### Hängende Textilien

**Breite:** 300 cm

**Gewicht:** 115 G/M<sup>2</sup>

**Material:** Trevira CS 100%

**Einlaufen:** 2 %

**Farbechtheit:**

Gegen Licht nach EN ISO 105-B02

- ≥ 5-7 (Skala 1-8)

Against washing according to EN

ISO 105-C06

- ≥ 5 (Scale 1-5)

**Schwerentflammbarkeit:**

- BS 5867-2 Type B - DIN 4102-1

B1 - IMO FTP Code 2010:

- DIN 4102-1 B1

- IMO FTP Code 2010: Part 7

- NF P 92-503-507, M1

- EN 13773, Class 1

- EN 13501-1, Class B-s1, d0

- NFPA 701

- UNI 8456/8457

**For further information:**

Svensson  
511 82 Kinna, Sweden

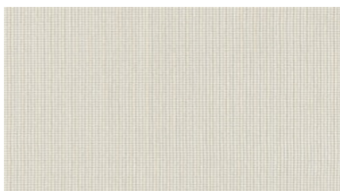
T: +46 320 20 92 00

F: +46 320 21 10 10

E: info@ludvigsvensson.com

**Wartungsanweisungen:**

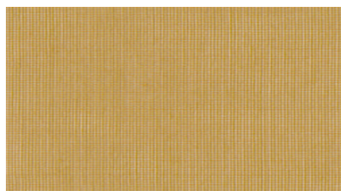




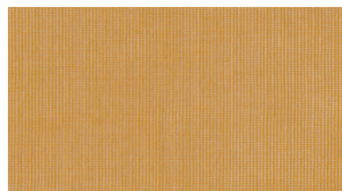
6711



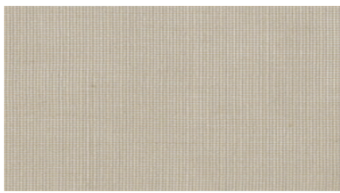
6723



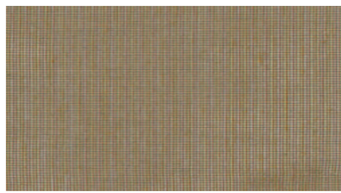
6736



6827



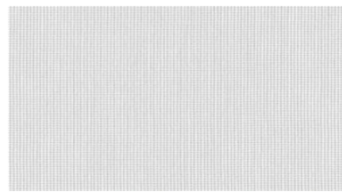
6841



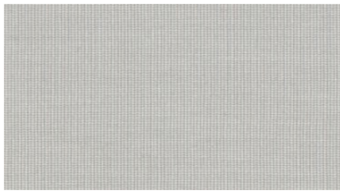
6862



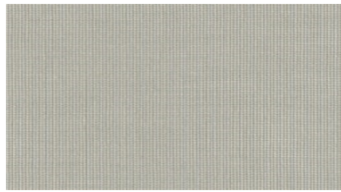
6920



8000



8220



8330

## AIRY

### Hängende Textilien

**Breite:** 300 cm

**Gewicht:** 115 G/M<sup>2</sup>

**Material:** Trevira CS 100%

**Einlaufen:** 2 %

**Farbechtheit:**

*Gegen Licht nach EN ISO 105-B02*

- ≥ 5-7 (Skala 1-8)

*Against washing according to EN*

*ISO 105-C06*

- ≥ 5 (Scale 1-5)

**Schwerentflammbarkeit:**

- BS 5867-2 Type B - DIN 4102-1

B1 - IMO FTP Code 2010:

- DIN 4102-1 B1

- IMO FTP Code 2010: Part 7

- NF P 92-503-507, M1

- EN 13773, Class 1

- EN 13501-1, Class B-s1, d0

- NFPA 701

- UNI 8456/8457

**For further information:**

Svensson  
511 82 Kinna, Sweden

T: +46 320 20 92 00

F: +46 320 21 10 10

E: info@ludvigsvensson.com

**Wartungsanweisungen:**

