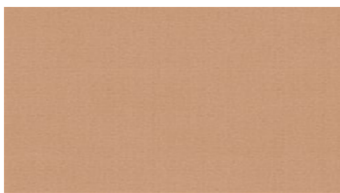




**RAMI**  
Upholstery fabrics



3022



3027



3030



3072



3124



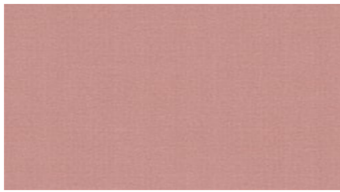
3145



3318



3536



3622



3651



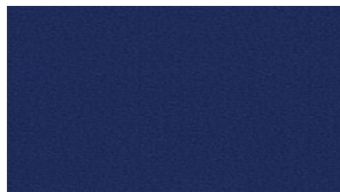
3726



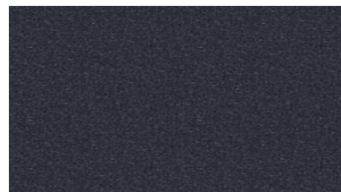
3863



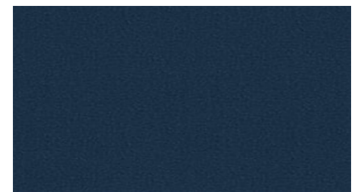
4342



4345



4380



4454



4625



4642



4745



4831

## RAMI

### Upholstery fabrics

**Designer:** Eva Larsson  
**Bredd:** 140 cm  
**Vikt:** 600 g/m<sup>2</sup>  
**Material:** Ull 80%  
 Rami 20%

**Färghärdighet:**  
 Mot gnidning torr enligt EN ISO 105-X12:  
 - 4 (Skala 1-5)  
 Mot ljus enligt EN ISO 105-B02  
 - 5-7 (Skala 1-8)  
 Mot gnidning våt enligt EN ISO 105-X12:  
 - 3-4 (Skala 1-5)

**Nötning:**  
 Martindale (Enligt EN ISO 12947-2):  
 - 70000 varv

**Svårantändlighet:**  
 - BS 5852 crib 5  
 - UNI 9175, 1 IM  
 - TB 117 IMO FTP Code Part 8 (IMO Res.A.652 (16))

#### Skötselansvisning:



#### Certifikat:



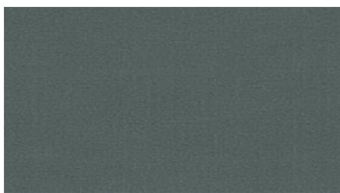
#### For further information:

Svensson  
 511 82 Kinna, Sweden

T: +46 320 20 92 00  
 F: +46 320 21 10 10  
 E: info@ludvigsvensson.com







4861



5028



5872



5936



6054



6072



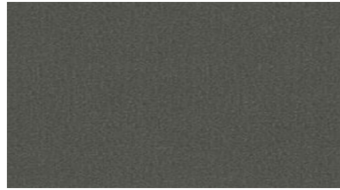
6165



6331



6336



6370



6380



6636



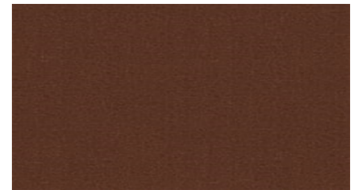
6727



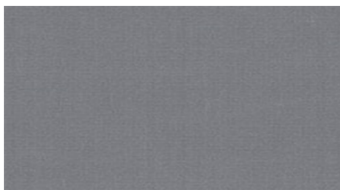
6810



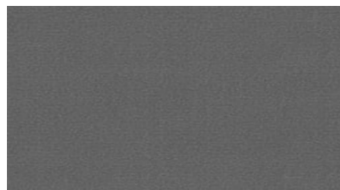
6918



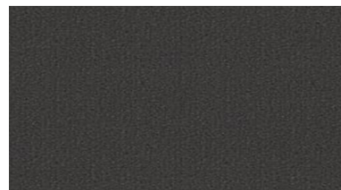
6972



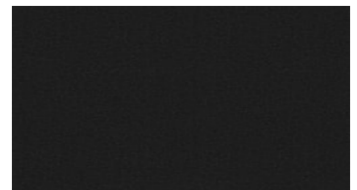
8200



8500



8700



8900

## RAMI

### Upholstery fabrics

**Designer:** Eva Larsson  
**Bredd:** 140 cm  
**Vikt:** 600 g/m<sup>2</sup>  
**Material:** Ull 80%  
 Rami 20%

**Färghärdighet:**  
*Mot gnidning torr enligt EN ISO 105-X12:*  
 - 4 (Skala 1-5)  
*Mot ljus enligt EN ISO 105-B02*  
 - 5-7 (Skala 1-8)  
*Mot gnidning våt enligt EN ISO 105-X12:*  
 - 3-4 (Skala 1-5)

**Nötning:**  
*Martindale (Enligt EN ISO 12947-2):*  
 - 70000 varv

**Svårantändlighet:**  
 - BS 5852 crib 5  
 - UNI 9175, 1 IM  
 - TB 117 IMO FTP Code Part 8 (IMO Res.A.652 (16))

#### Skötselansvisning:



#### Certifikat:



#### For further information:

Svensson  
 511 82 Kinna, Sweden

T: +46 320 20 92 00  
 F: +46 320 21 10 10  
 E: info@ludvigsvensson.com

