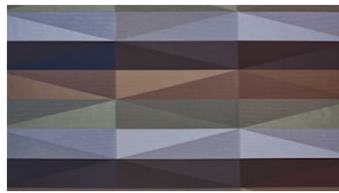




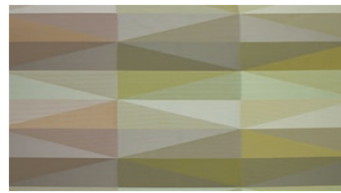
**PATCH**  
Hanging fabrics



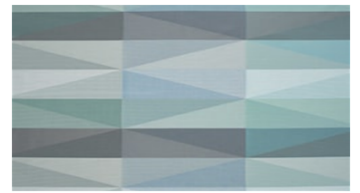
3040



4380



6600



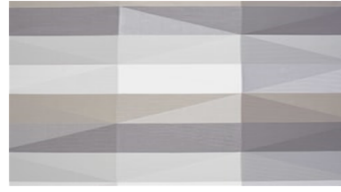
4800



6400



6700



8400

## PATCH

### Hanging fabrics

**Width:** 150 cm  
**Weight:** 200 g/m<sup>2</sup>  
**Material:** Trevira CS 100%  
**Shrinkage:** 2 %

**Color fastness:**  
*Against dry rubbing according to EN ISO 105-X12:*  
- 4 (Scale 1-5)  
*Against light according to EN ISO 105-B02*  
- 5-7 (Scale 1-8)  
*Against washing according to EN ISO 105-C06*  
- 5 (Scale 1-5)  
*Against wet rubbing according to EN ISO 105-X12:*  
- 3 (Scale 1-5)

**Flame retardancy:**  
- BS 5867:  
- DIN 4102-1 class B1  
- IMO FTP Code Part 7

**Acoustics:**  
Measurement of sound absorption in a reverberation room: EN ISO 354:2003. Ration of sound absorption EN ISO 11654:1997:  $w = 0,75$  Class C

**Care instructions:**



**For further information:**

Svensson  
511 82 Kinna, Sweden

T: +46 320 20 92 00  
F: +46 320 21 10 10  
E: [info@ludvigsvensson.com](mailto:info@ludvigsvensson.com)

