



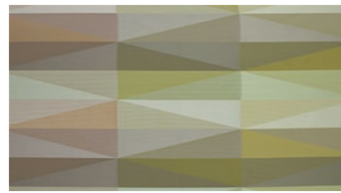
**PATCH**  
Hanging fabrics



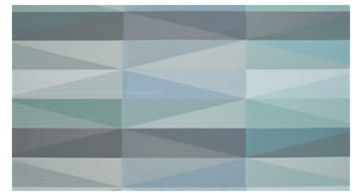
3040



4380



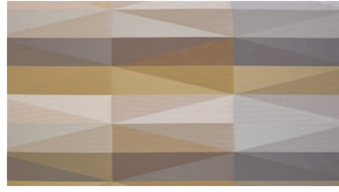
6600



4800



6400



6700



8400

## PATCH

### Hanging fabrics

**Breite:** 150 cm

**Gewicht:** 200 G/M<sup>2</sup>

**Material:** Trevira CS 100%

**Einlaufen:** 2 %

**Color fastness:**

*Against dry rubbing according to*

*EN ISO 105-X12:*

- 4 (Scale 1-5)

*Gegen Licht nach EN ISO 105-B02*

- 5-7 (Skala 1-8)

*Against washing according to EN*

*ISO 105-C06*

- 5 (Scale 1-5)

*Against wet rubbing according to*

*EN ISO 105-X12:*

- 3 (Scale 1-5)

**Schwerentflammbarkeit:**

- BS 5867:

- DIN 4102, B1

- IMO FTP Code Part 7

- EN 13501-1, B-s1, d0

- EN 13773, Class 1

- NF P 92-503-507, M1

- NFPA 701

- UNI 8456/8457

**Akustik:**

Messung der Schallabsorption in  
Hallräumen EN ISO 354:2003. Schallabsorber

fr die Anwendug in Gebäuden Bewertung

der Schallaabsorption: EN ISO 11654:1997:

w = 0,75 Class C

**Wartungsanweisungen:**



**For further information:**

Svensson  
511 82 Kinna, Sweden

T: +46 320 20 92 00

F: +46 320 21 10 10

E: info@ludvigsvensson.com

