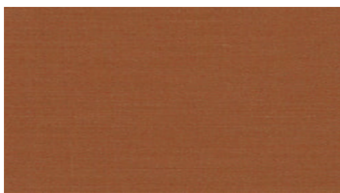
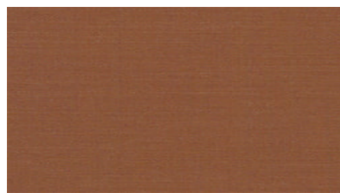




CODY
Upholstery fabrics



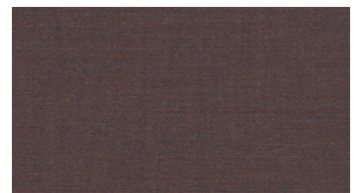
3226



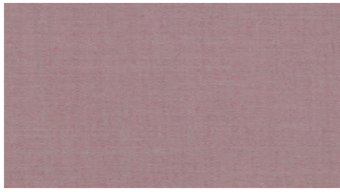
3334



3350



3572



3633



4152



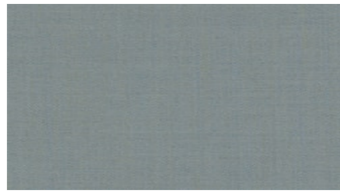
4380



4462



4522



4831



4862



5251



5261



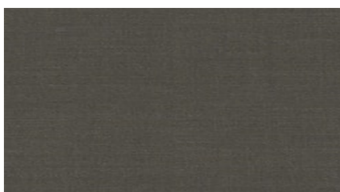
5731



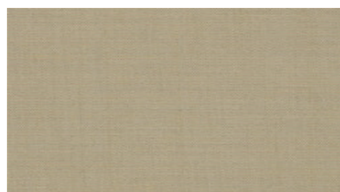
5870



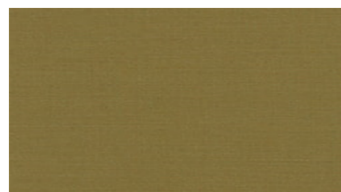
5934



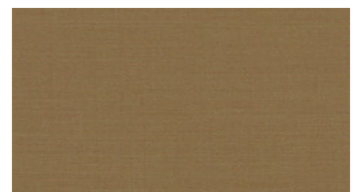
6360



6422



6443



6453

CODY

Upholstery fabrics

Width: 140 cm
Weight: 280 g/m²
Material: Wool 85%
 Polyamid 15%

Color fastness:
Against dry rubbing according to EN ISO 105-X12:
 - ≥ 4 (Scale 1-5)
Against light according to EN ISO 105-B02
 - ≥ 5-7 (Scale 1-8)
Against wet rubbing according to EN ISO 105-X12:
 - ≥ 3-4 (Scale 1-5)

Abrasion resistance:
Martindale (According to EN ISO 12947-2):
 - 100000 rubs

Flame retardancy:
 - EN ISO 1021 part 1, 2- BS 5852, Crib 5- IMO FTP Code 2010:
 - BS 5852, Crib 5
 - IMO FTP Code 2010: Part 8

Care instructions:



For further information:

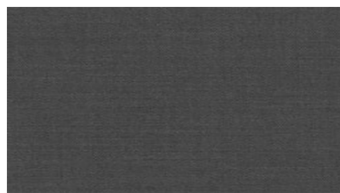
Svensson
 511 82 Kinna, Sweden

T: +46 320 20 92 00
 F: +46 320 21 10 10
 E: info@ludvigsvensson.com





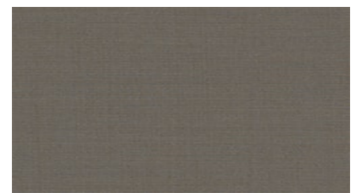
6520



6560



6740



6750



6770



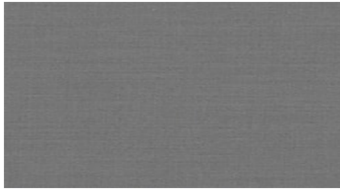
6820



6826



6841



8400



8800

CODY Upholstery fabrics

Width: 140 cm

Weight: 280 g/m²

Material: Wool 85%
Polyamid 15%

Color fastness:

Against dry rubbing according to
EN ISO 105-X12:
- ≥ 4 (Scale 1-5)

Against light according to EN ISO
105-B02

- ≥ 5-7 (Scale 1-8)

Against wet rubbing according to
EN ISO 105-X12:

- ≥ 3-4 (Scale 1-5)

Abrasion resistance:

Martindale (According to EN ISO
12947-2):

- 100000 rubs

Care instructions:



Flame retardancy:

- EN ISO 1021 part 1, 2- BS 5852,
Crib 5- IMO FTP Code 2010:
- BS 5852, Crib 5
- IMO FTP Code 2010: Part 8

For further information:

Svensson
511 82 Kinna, Sweden

T: +46 320 20 92 00

F: +46 320 21 10 10

E: info@ludvigsvensson.com

